

# iDC iPDU-M Series



The iPDU-M series rack iPDU is designed for small and medium-sized datacenters. It offers reliable power distribution and metering at the inlet level and support environmental sensors to monitoring temperature and humidity. The iPDU-M series rack iPDU makes it easy to make informed capacity planning decisions and to increase availability and energy efficiency.

The iPDU-M series rack iPDUs are:



### Sustainable

Provide different functions in different stages of business by using hot-swap function modules



### Upgradeable

Easy to upgrade a basic PDU to a local metered PDU and then to an IP monitored intelligent PDU (iPDU) by just replacing the function modules



### Maintainable

Safe and reliable in-field maintenance without affecting power supply to IT equipment



Think it.  
Plan it.  
Own it.

# Key Features

## Hardware Features

- Hot-swap NMC (Network Management and Control) module and for easy upgrade and maintenance
- Clear LCD screen displays the Current (Amps), Voltage (Volts), Power (kW), Energy (kWh) and Frequency (Hz)
- Daisy-chainable up to 1 master and 4 slave units
- Available with IEC and UK outlets
- Outlet locking for IEC C13 and C19 outlets

## Remote Access

- Remote access via TCP/IP and built-in 10/100Base-T Ethernet port
- Support network communication protocols including TCP, UDP, HTTP / HTTPS, TELNET, SNMP, Modbus RTU
- Support network services including TFTP and SMTP
- Support 1 level account password security
- Support various web browsers like IE, Firefox, Chrome, Safari

## Monitor

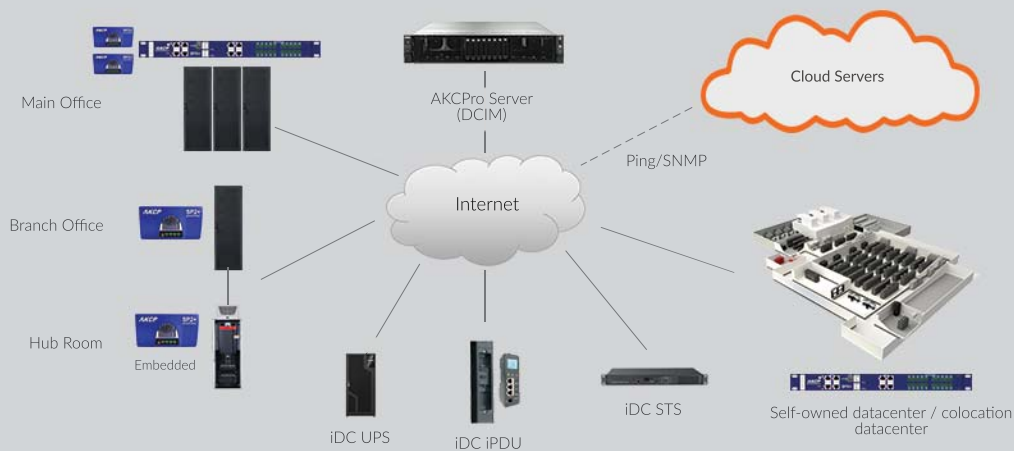
- Remotely monitor voltage, current, active power, apparent power, power factor, energy and frequency at input circuit level
- Rack environmental monitoring via external connected T/H sensor (optional)
- Metering accuracy of +/-1%
- Support threshold settings and alerts for voltage, current, temperature and humidity (optional)

## Mounting

- Two-ends bracket mounting

# DCIM Ready

Managing iDC iPDU has never been more easier. Built-in template for monitoring real-time power consumption of iDC iPDU has been engineered into our DCIM System which makes integration with DCIM System within seconds!



Think it.  
Plan it.  
Own it.

# Technical Specification

## Electrical

Input voltage	Refer to models table below for more detail
Input current	Refer to models table below for more detail
Input frequency	50/60Hz
Input plug	Refer to models table below for more detail (Remark: support options for top-feed or bottom-feed input power cord for all models)
Output voltage	100-240 VAC +(1%+3 digit)
Output current	1P: 16A/32A, 3P: 32A per phase
Overload protection (internal circuit breaker)	None
Outlet Locking	Available for IEC C13 and C19 outlets
Outlet configurations	Refer to models table below for more detail

## Physical

Dimensions	Refer to models table below for more detail
Power cord length	Refer to models table below for more detail
Rack space	0U

## Environmental

Temperature (Operating / Storage)	Operating: -10 to 45°C Storage: -20 to 70°C
Humidity	5-95% RH / 5-95%, Non-condensing

## Compliance with standards

EMC verification	EN55022, EN61000, FCC Part 15 Class A, ICES
Safety verification	IEC/EN 60950, IEC/EN 62368
Environmental verification	ROHS 2.0

# Models

Model	M-16S-200400	M-32S-200400	M-32T-200600	M-16S-120012	M-16S-000020	M-32S-160404
Part number	iDCIFIA-110-2004	iDCIFIA-130-2004	iDCIFIA-330-2006	iDCIFXA-110-1212	iDCIFBA-110-2000	iDCIFXA-130-160404
Rack space	0U	0U	0U	0U	0U	0U
Phase	Single Phase	Single Phase	Three Phase	Single Phase	Single Phase	Single Phase
Input voltage	100-240V	100-240V	200-415V	100-240V	100-240V	100-240V
Derated AMP	16A	32A	3x 32A	16A	16A	32A
Input plug	IEC60309 (16A 2P+E)	IEC60309 (32A 2P+E)	IEC60309 (32A 3P+N+E)	IEC60309 (16A 2P+E)	IEC60309 (16A 2P+E)	IEC60309 (32A 2P+E)
Input cord with length	3 x 2.5mm <sup>2</sup> x 3m	3 x 6.0mm <sup>2</sup> x 3m	5 x 6.0mm <sup>2</sup> x 3m	3 x 2.5mm <sup>2</sup> x 3m	3 x 2.5mm <sup>2</sup> x 3m	3 x 6.0mm <sup>2</sup> x 3m
Outlet	20x IEC 60320 C13 + 4x IEC 60320 C19	20x IEC 60320 C13 + 4x IEC 60320 C19	20x IEC 60320 C13 + 6x IEC 60320 C19	12x IEC 60320 C13 +12x BS1363 UK	20x BS1363 UK	16x IEC 60320 C13 + 4x IEC60320 C19 + 4x BS1363 UK
Weight	4KG	4KG	5KG	4KG	4KG	4KG
Dimension (L*W*D) mm	1241*50*44.4	1291*50*44.4	1442*56*44.4	1563.2*62*44.4	1540*62*44.4	1354*62*44.4

\*The specification and pictures are subject to change without notice.  
\*Customization is available as requested.

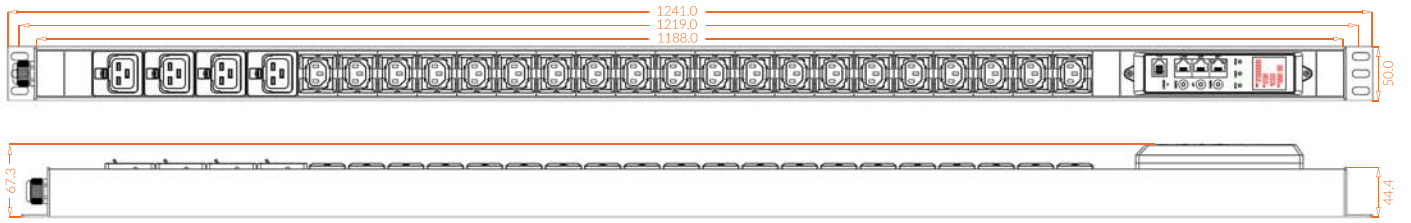


Think it.  
Plan it.  
Own it.

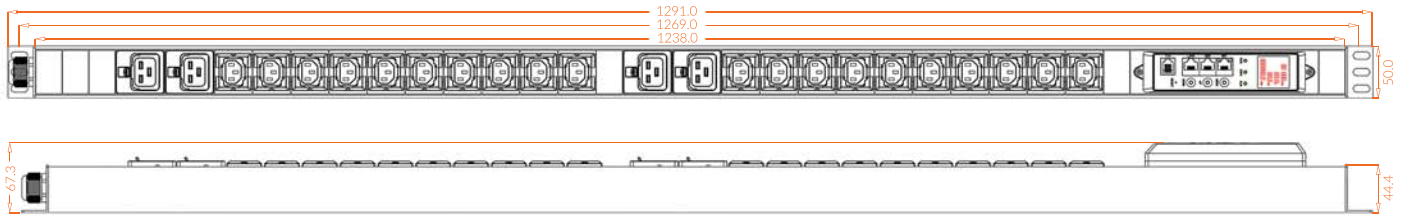
+852 2113 2968 | enquiry@iDCmini.com | www.iDCmini.com

# Product Photos

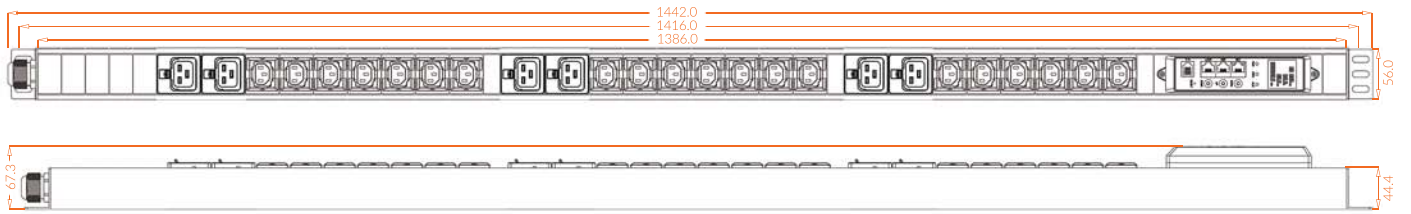
M-16S-200400



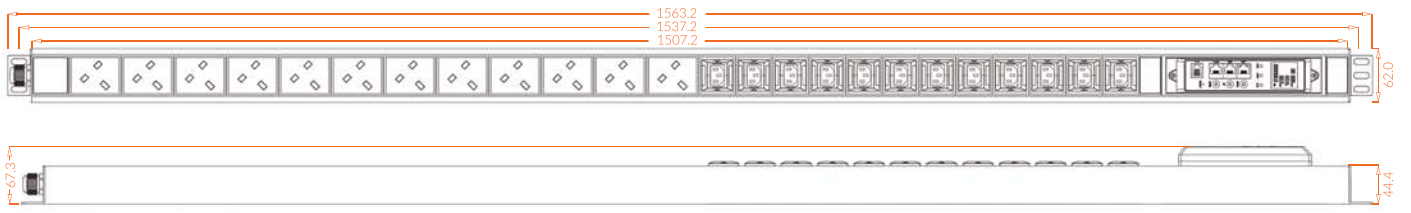
M-32S-200400



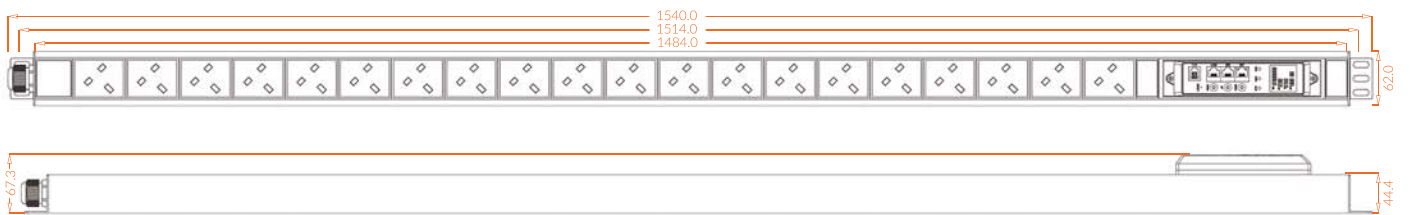
M-32T-200600



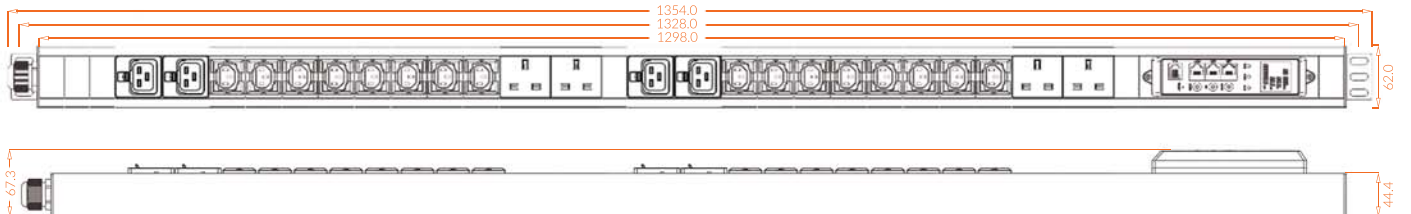
M-16S-120012



M-16S-000020



M-32S-160404



Think it.  
Plan it.  
Own it.