

iDC FlexiPower Online IoT Rack 1-20kW

A high performance IoT enabled double conversion online rackmounted UPS



iDC FlexiPower Online IoT UPS is a high performance, true online conversion online UPS capable of supporting loads from 1 to 20kW. It comes with IoT compatibility automatically monitoring power quality and battery status, with easy access to your UPS status, offering protection to your crucial equipment.



IoT Compatibility

Easy to access your UPS and battery status and events on a real time basis through mobile APP



High Efficiency

A complete green solution with energy saving



Unit Power Factor

Enjoy more power in the same space with a power factor of 1



Flexibility

Adjustable charging current and flexible battery configuration



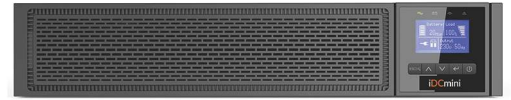
Think it.
Plan it.
Own it.

Key Features

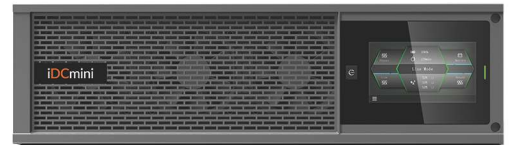
- True double conversion design online technology
- Power Capacity: 1-20kW
- Real output factor 1.0 offering more power in same space
- Green and high efficiency with energy and space saving
- Optimize charging method to maximize battery lifetime
- Adjustable charging current and flexible battery configuration
- Highly reliable with built-in OVCD protection, fan lock detection, over temperature detection and overload warning
- Programmable outlet group to increase back up time for the most critical equipment
- Hot swappable battery for UPS models
- Low audible noise at typical load
- LCD support up to 10 languages for easy installation and service
- Embedded Ethernet port solution & optional WLAN module for IoT connection
- Mobile APP, both Android and iOS, for monitoring
- Upgrade network card compliance with IEC standard cybersecurity
- Special enhancement features (20kW unit): 3 phase mode to meet utility and load wiring
- Special enhancement features (20kW unit): Alternative option with dual source input is available for utility and bypass



iDC FlexiPower Online IoT 1-3kW



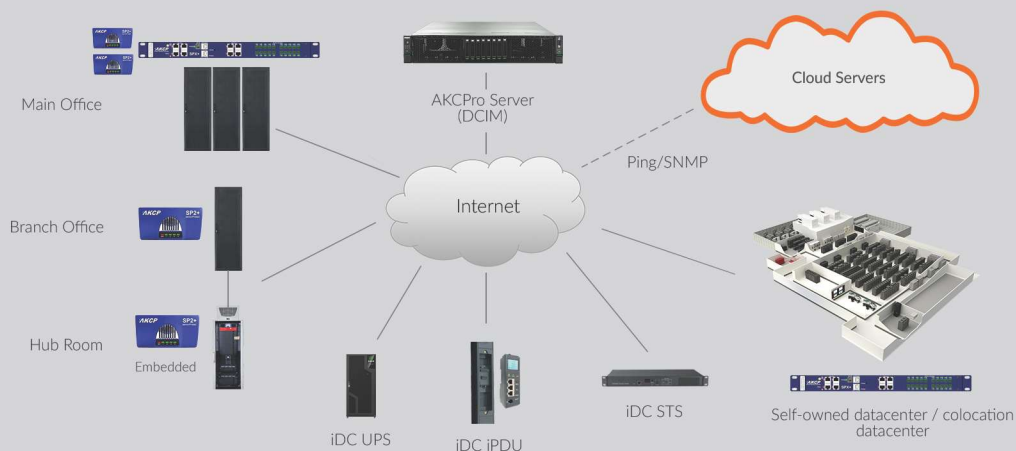
iDC FlexiPower Online IoT 6-10kW



iDC FlexiPower Online IoT 20kW

DCIM Ready

Managing iDC UPS has never been more easier. Built-in template for monitoring real-time power consumption and operational status of iDC UPS has been engineered into our DCIM System which makes integration with DCIM System within seconds!



Think it.
Plan it.
Own it.

Technical Specification

Model	FP-OR-IOT-1K	FP-OR-IOT-1KS	FP-OR-IOT-2K	FP-OR-IOT-2KS
Power Rating	1000VA/1000W	1000VA/1000W	2000VA/2000W	2000VA/2000W
Efficiency				
Double conversion mode	89%	89%	93%	93%
ECO mode	96%	96%	97%	97%
Input Performance				
Voltage range	160-300V 100% load, 110-160V derating to 50% load linearly	160-300V 100% load, 110-160V derating to 50% load linearly	160-300V 100% load, 110-160V derating to 50% load linearly	160-300V 100% load, 110-160V derating to 50% load linearly
Rated frequency	50Hz/60Hz	50Hz/60Hz	50Hz/60Hz	50Hz/60Hz
Frequency range	40Hz-70Hz(45Hz-55Hz 54Hz-66Hz @ load>60%)	40Hz-70Hz(45Hz-55Hz 54Hz-66Hz @ load>60%)	40Hz-70Hz(45Hz-55Hz 54Hz-66Hz @ load>60%)	40Hz-70Hz(45Hz-55Hz 54Hz-66Hz @ load>60%)
PF	>0.99	>0.99	>0.99	>0.99
THDI	<5%	<5%	<5%	<5%
Input Connection	IEC C14	IEC C14	IEC C20	IEC C20
Output Performance				
Rated voltage	200/208/220/230/240VAC (derating 10% at 208V, derating 20% at 200V)	200/208/220/230/240VAC (derating 10% at 208V, derating 20% at 200V)	200/208/220/230/240VAC (derating 10% at 208V, derating 20% at 200V)	200/208/220/230/240VAC (derating 10% at 208V, derating 20% at 200V)
Rated frequency	50Hz/60Hz	50Hz/60Hz	50Hz/60Hz	50Hz/60Hz
Maximum PF	1	1	1	1
Voltage accuracy	±1%	±1%	±1%	±1%
THDv	<1% linear load <5% non linear load	<1% linear load <5% non linear load	<1% linear load <5% non linear load	<1% linear load <5% non linear load
Transfer time	0ms(4ms @ line <->bypass; 10ms @ ECO<->Inverter)	0ms(4ms @ line <->bypass; 10ms @ ECO<->Inverter)	0ms(4ms @ line <->bypass; 10ms @ ECO<->Inverter)	0ms(4ms @ line <->bypass; 10ms @ ECO<->Inverter)
Crest Ratio	max 3:1	max 3:1	max 3:1	max 3:1
Overload (line mode)	100%<load≤105% continuous 105%< load ≤125% for 3mins 125<load≤150% for 30s >150% for 500ms	100%<load≤105% continuous 105%< load ≤125% for 3mins 125<load≤150% for 30s >150% for 500ms	100%<load≤105% continuous 105%< load ≤125% for 3mins 125<load≤150% for 30s >150% for 500ms	100%<load≤105% continuous 105%< load ≤125% for 3mins 125<load≤150% for 30s >150% for 500ms
Output Connection				
Wiring/socket	1 main outlet group (with 4 x IEC C13) and 1 programmable outlet group (with 4 x IEC C13)	1 main outlet group (with 4 x IEC C13) and 1 programmable outlet group (with 4 x IEC C13)	1 main outlet group (with 4 x IEC C13) and 1 programmable outlet group (with 4 x IEC C13)	1 main outlet group (with 4 x IEC C13) and 1 programmable outlet group (with 4 x IEC C13)
Load segment control	Yes	Yes	Yes	Yes
Battery				
Voltage	36V/24VDC	36VDC	72V/48VDC	72VDC
Capacity(AH)	3 x 12V/7Ah	N/A	6 x 12V/7Ah	N/A
Backup time Typical value by default battery capacity, PF=1	3.0min 100% load 12.2min 50% load	N/A	3.3min 100% load 12.9min 50% load	N/A
Maximum connect external battery module quantity	4	4	4	4
Charger				
Charging current	1.5A	8A	1.5A	8A
Recharging time	3h to 90%	N/A	3h to 90%	N/A
Other Working Mode				
CVCF	Yes (derating to 60% load)	Yes (derating to 60% load)	Yes (derating to 60% load)	Yes (derating to 60% load)
Parallel	No	No	No	No



Think it.
Plan it.
Own it.

Technical Specification

Model	FP-OR-IOT-1K	FP-OR-IOT-1KS	FP-OR-IOT-2K	FP-OR-IOT-2KS
HMI (Human Machine Interface)				
Display	Dot matrix LCD, rotatable manually	Dot matrix LCD, rotatable manually	Dot matrix LCD, rotatable manually	Dot matrix LCD, rotatable manually
Language	10 Languages	10 Languages	10 Languages	10 Languages
USB	USB 2.0 with HID	USB 2.0 with HID	USB 2.0 with HID	USB 2.0 with HID
RS232	Yes (DB9)	Yes (DB9)	Yes (DB9)	Yes (DB9)
Dry in/out	1 programmable dry in; 1 programmable dry out	1 programmable dry in; 1 programmable dry out	1 programmable dry in; 1 programmable dry out	1 programmable dry in; 1 programmable dry out
EPO	Yes	Yes	Yes	Yes
Intelligent slot	Yes (for long card)	Yes (for long card)	Yes (for long card)	Yes (for long card)
Network card	Optional, NMC long card	Optional, NMC long card	Optional, NMC long card	Optional, NMC long card
Modbus card	Optional, CMC/Modbus long card	Optional, CMC/Modbus long card	Optional, CMC/Modbus long card	Optional, CMC/Modbus long card
Dry contactor card	Optional, AS400 long card	Optional, AS400 long card	Optional, AS400 long card	Optional, AS400 long card
WLAN module	Optional, HDMI type	Optional, HDMI type	Optional, HDMI type	Optional, HDMI type
Ethernet port for IOT	RJ45	RJ45	RJ45	RJ45
DCIM connection	Ready	Ready	Ready	Ready
Physical Performance				
Dimension (W*D*H) mm	438*445*86.5 (2U)	438*445*86.5 (2U)	438*600*86.5 (2U)	438*600*86.5 (2U)
IP protection level	IP20	IP20	IP20	IP20
Environment				
Operating temperature	0-40°C	0-40°C	0-40°C	0-40°C
Relative Humidity	0-95%	0-95%	0-95%	0-95%
Operating Altitude	0~3000m (the load derating 1 % every up 100m @1000~3000m)	0~3000m (the load derating 1 % every up 100m @1000~3000m)	0~3000m (the load derating 1 % every up 100m @1000~3000m)	0~3000m (the load derating 1 % every up 100m @1000~3000m)
Acoustic Noise	<45dB @ typical load with battery fully charged	<45dB @ typical load with battery fully charged	<50dB @ typical load with battery fully charged	<50dB @ typical load with battery fully charged
Certification				
	CE, IEC/EN 62040	CE, IEC/EN 62040	CE, IEC/EN 62040	CE, IEC/EN 62040
EMI				
Conduction/Radiation	C2	C2	C2	C2
EMS				
ESD	IEC/EN 61000-4-2	IEC/EN 61000-4-2	IEC/EN 61000-4-2	IEC/EN 61000-4-2
RS	IEC/EN 61000-4-3	IEC/EN 61000-4-3	IEC/EN 61000-4-3	IEC/EN 61000-4-3
EFT	IEC/EN 61000-4-4	IEC/EN 61000-4-4	IEC/EN 61000-4-4	IEC/EN 61000-4-4
Surge	IEC/EN 61000-4-5	IEC/EN 61000-4-5	IEC/EN 61000-4-5	IEC/EN 61000-4-5
Accessory				
Maintenance bypass switch	N/A	N/A	N/A	N/A
Input power cable	Yes	Yes	Yes	Yes
Output power cable	Yes, 1*10A	Yes, 1*10A	Yes, 1*10A	Yes, 1*10A
EBM cable	Yes (in EBM)	Yes (in EBM)	Yes (in EBM)	Yes (in EBM)
USB cable	Yes	Yes	Yes	Yes
RS232 cable	Optional	Optional	Optional	Optional
Rail kit	Optional	Optional	Optional	Optional
Tower feet	Yes	Yes	Yes	Yes
Rack mount kit	Yes	Yes	Yes	Yes
Manual	Yes	Yes	Yes	Yes

*Due to continuous product improvement programs, specifications are subject to change without notice.



Think it.
Plan it.
Own it.

+852 2113 2968 | enquiry@iDCmini.com | www.iDCmini.com

Technical Specification

Model	FP-OR-IOT-3K	FP-OR-IOT-3KS	FP-OR-IOT-6K	FP-OR-IOT-6KS
Power Rating	3000VA/3000W	3000VA/3000W	6000VA/6000W	6000VA/6000W
Efficiency				
Double conversion mode	93%	93%	95%	95%
ECO mode	97%	97%	98%	98%
Input Performance				
Voltage range	160-300V 100% load, 110-160V derating to 50% load linearly	160-300V 100% load, 110-160V derating to 50% load linearly	160-275V 100% load, 110-160V derating to 50% load linearly	160-275V 100% load, 110-160V derating to 50% load linearly
Rated frequency	50Hz/60Hz	50Hz/60Hz	50Hz/60Hz	50Hz/60Hz
Frequency range	40Hz-70Hz(45Hz-55Hz 54Hz-66Hz @ load>60%)	40Hz-70Hz(45Hz-55Hz 54Hz-66Hz @ load>60%)	40Hz-70Hz(45Hz-55Hz 54Hz-66Hz @ load>60%)	40Hz-70Hz(45Hz-55Hz 54Hz-66Hz @ load>60%)
PF	>0.99	>0.99	>0.995	>0.995
THDI	<5%	<5%	<3% linear load, <5% non linear load	<3% linear load, <5% non linear load
Input Connection				
Input Connection	IEC C20	IEC C20	L/N/PE hardware terminal connection	L/N/PE hardware terminal connection
Output Performance				
Rated voltage	200/208/220/230/240VAC (derating 10% at 208V, derating 20% at 200V)	200/208/220/230/240VAC (derating 10% at 208V, derating 20% at 200V)	220/230/240V	220/230/240V
Rated frequency	50Hz/60Hz	50Hz/60Hz	50Hz/60Hz	50Hz/60Hz
Maximum PF	1	1	1	1
Voltage accuracy	±1%	±1%	±1%	±1%
THDv	<1% linear load <5% non linear load	<1% linear load <5% non linear load	<1% linear load <5% non linear load	<1% linear load <5% non linear load
Transfer time	0ms (4ms @ line <-> bypass; 10ms @ ECO<->Inverter)	0ms (4ms @ line <-> bypass; 10ms @ ECO<->Inverter)	0ms (10ms @ ECO->Inverter)	0ms (10ms @ ECO->Inverter)
Crest Ratio	max 3:1	max 3:1	max 3:1	max 3:1
Overload (line mode)	100%<load≤105% continuous 105%< load ≤125% for 3mins 125%<load≤150% for 30s >150% for 500ms	100%<load≤105% continuous 105%< load ≤125% for 3mins 125%<load≤150% for 30s >150% for 500ms	100%<load≤105% continuous 105%< load ≤125% for 10 mins 125%<load≤150% for 30s >150% for 500ms	100%<load≤105% continuous 105%< load ≤125% for 10 mins 125%<load≤150% for 30s >150% for 500ms
Output Connection				
Wiring/socket	1 main outlet group (with 1 x IEC C19 + 4 x IEC C13) and 1 programmable outlet group (with 4 x IEC C13)	1 main outlet group (with 1 x IEC C19 + 4 x IEC C13) and 1 programmable outlet group (with 4 x IEC C13)	L/N/PE hardware terminal connection	L/N/PE hardware terminal connection
Load segment control	Yes	Yes	Optional (need MBP model)	Optional (need MBP model)
Battery				
Voltage	72VDC	72VDC	192~240VDC adjustable	192~240VDC adjustable
Capacity(AH)	6 x 12V/9Ah	N/A	16*12V/7Ah, 16~20pcs adjustable	N/A
Backup time Typical value by default battery capacity, PF=1	2.5min 100% load 9.3min 50% load	N/A	3.6min 100% load 9.6min 50% load	N/A
Maximum connect external battery module quantity				
Maximum connect external battery module quantity	4	4	6	6
Charger				
Charging current	1.5A	8A	1.4A (0-4A adjustable)	4A (0-12A adjustable)
Recharging time	3h to 90%	N/A	3h to 90%	N/A
Other Working Mode				
CVCF	Yes (derating to 60% load)	Yes (derating to 60% load)	Yes (derating to 60% load)	Yes (derating to 60% load)
Parallel	No	No	Optional (up to 3)	Optional (up to 3)



Think it.
Plan it.
Own it.

Technical Specification

Model	FP-OR-IOT-3K	FP-OR-IOT-3KS	FP-OR-IOT-6K	FP-OR-IOT-6KS
HMI (Human Machine Interface)				
Display	Dot matrix LCD, rotatable manually	Dot matrix LCD, rotatable manually	Dot matrix LCD, rotatable manually	Dot matrix LCD, rotatable manually
Language	10 Languages	10 Languages	10 Languages	10 Languages
USB	USB 2.0 with HID	USB 2.0 with HID	USB 2.0 with HID	USB 2.0 with HID
RS232	Yes (DB9)	Yes (DB9)	Yes (DB9)	Yes (DB9)
Dry in/out	1 programmable dry in; 1 programmable dry out	1 programmable dry in; 1 programmable dry out	1 programmable dry in; 1 programmable dry out	1 programmable dry in; 1 programmable dry out
EPO	Yes	Yes	Yes	Yes
Intelligent slot	Yes (for long card)	Yes (for long card)	Yes (for long card)	Yes (for long card)
Network card	Optional, NMC long card	Optional, NMC long card	Optional, NMC long card	Optional, NMC long card
Modbus card	Optional, CMC/Modbus long card	Optional, CMC/Modbus long card	Optional, CMC/Modbus long card	Optional, CMC/Modbus long card
Dry contactor card	Optional, AS400 long card	Optional, AS400 long card	Optional, AS400 long card	Optional, AS400 long card
WLAN module	Optional, HDMI type	Optional, HDMI type	Optional, HDMI type	Optional, HDMI type
Ethernet port for IOT	RJ45	RJ45	RJ45	RJ45
DCIM connection	Ready	Ready	Ready	Ready
Physical Performance				
Dimension (W*D*H) mm	438*600*86.5 (2U)	438*600*86.5 (2U)	5U height including 438*573*86.2 (power module, 2U) 438*593*129 (Battery, 3U)	438*573*86.2 (power module, 2U)
IP protection level	IP20	IP20	IP20	IP20
Environment				
Operating temperature	0-40°C	0-40°C	0-50°C (power derating to 50% @40-50°C)	0-50°C (power derating to 50% @40-50°C)
Relative Humidity	0-95%	0-95%	0-95%	0-95%
Operating Altitude	0-3000m (the load derating 1% every up 100m @1000-3000m)	0-3000m (the load derating 1% every up 100m @1000-3000m)	0-3000m (the load derating 1% every up 100m @1000-3000m)	0-3000m (the load derating 1% every up 100m @1000-3000m)
Acoustic Noise	<50dB @ typical load with battery fully charged	<50dB @ typical load with battery fully charged	<50dB @ typical load with battery fully charged	<50dB @ typical load with battery fully charged
Certification	CE,IEC/EN 62040	CE,IEC/EN 62040	CE,IEC/EN 62040	CE,IEC/EN 62040
EMI				
Conduction/Radiation	C2	C2	C3	C3
EMS				
ESD	IEC/EN 61000-4-2	IEC/EN 61000-4-2	IEC/EN 61000-4-2	IEC/EN 61000-4-2
RS	IEC/EN 61000-4-3	IEC/EN 61000-4-3	IEC/EN 61000-4-3	IEC/EN 61000-4-3
EFT	IEC/EN 61000-4-4	IEC/EN 61000-4-4	IEC/EN 61000-4-4	IEC/EN 61000-4-4
Surge	IEC/EN 61000-4-5	IEC/EN 61000-4-5	IEC/EN 61000-4-5	IEC/EN 61000-4-5
Accessory				
Maintenance bypass switch	N/A	N/A	Optional (built in 1 main outlet group with 1 x IEC C19 + 2 x IEC C13 and 1 programmable outlet group with 1 x IEC C19 + 2 x IEC C13)	Optional (built in 1 main outlet group with 1 x IEC C19 + 2 x IEC C13 and 1 programmable outlet group with 1 x IEC C19 + 2 x IEC C13)
Input power cable	Yes	Yes	N/A	N/A
Output power cable	Yes, 1*10A	Yes, 1*10A	N/A	N/A
EBM cable	Yes (in EBM)	Yes (in EBM)	Yes (in EBM)	Yes (in EBM)
USB cable	Yes	Yes	Yes	Yes
RS232 cable	Optional	Optional	Optional	Optional
Rail kit	Optional	Optional	Optional	Optional
Tower feet	Yes	Yes	Yes	Yes
Rack mount kit	Yes	Yes	Yes	Yes
Manual	Yes	Yes	Yes	Yes

*Due to continuous product improvement programs, specifications are subject to change without notice.



Think it.
Plan it.
Own it.

+852 2113 2968 | enquiry@iDCmini.com | www.iDCmini.com

Technical Specification

Model	FP-OR-IOT-10K	FP-OR-IOT-10KS	FP-OR-IOT-20K	FP-OR-IOT-20KS
Power Rating	10000VA/10000W	10000VA/10000W	20000VA/20000W	20000VA/20000W
Efficiency				
Double conversion mode	95%	95%	96%	96%
ECO mode	98%	98%	98.8%	98.8%
Input Performance				
Voltage range	160-275V 100% load, 110-160V derating to 50% load linearly	160-275V 100% load, 110-160V derating to 50% load linearly	273-520V 100% load, 173-273V derating to 50% load linearly	273-520V 100% load, 173-273V derating to 50% load linearly
Rated frequency	50Hz/60Hz	50Hz/60Hz	50Hz/60Hz	50Hz/60Hz
Frequency range	40Hz-70Hz(45Hz-55Hz 54Hz-66Hz @ load>60%)	40Hz-70Hz(45Hz-55Hz 54Hz-66Hz @ load>60%)	40Hz-70Hz(45Hz-55Hz 54Hz-66Hz @ load>60%)	40Hz-70Hz(45Hz-55Hz 54Hz-66Hz @ load>60%)
PF	>0.995	>0.995	>0.995	>0.995
THDI	<3% linear load, <5% non linear load	<3% linear load, <5% non linear load	<3% linear load, <5% non linear load	<3% linear load, <5% non linear load
Input Connection				
Input Connection	L/N/PE hardware terminal connection	L/N/PE hardware terminal connection	L1/L2/L3/N/PE hardware terminal connection (Optional) Dual input for line and bypass	L1/L2/L3/N/PE hardware terminal connection (Optional) Dual input for line and bypass
Output Performance				
Rated voltage	220/230/240V	220/230/240V	380/400/415V	380/400/415V
Rated frequency	50Hz/60Hz	50Hz/60Hz	50Hz/60Hz	50Hz/60Hz
Maximum PF	1	1	1	1
Voltage accuracy	±1%	±1%	±1%	±1%
THDv	<1% linear load <5% non linear load	<1% linear load <5% non linear load	<1% linear load <5% non linear load	<1% linear load <5% non linear load
Transfer time	0ms (10ms @ ECO->Inverter)	0ms (10ms @ ECO->Inverter)	0ms (2ms @ ECO->Inverter)	0ms (2ms @ ECO->Inverter)
Crest Ratio	max 3:1	max 3:1	max 3:1	max 3:1
Overload (line mode)	100%<load≤105% continuous 105%< load ≤125% for 10mins 125<load≤150% for 30s >150% for 500ms	100%<load≤105% continuous 105%< load ≤125% for 10mins 125<load≤150% for 30s >150% for 500ms	100%<load≤105% continuous 105%< load ≤125% for 10mins 125<load≤150% for 1min >150% for 500ms	100%<load≤105% continuous 105%< load ≤125% for 10mins 125<load≤150% for 1min >150% for 500ms
Output Connection				
Wiring/socket	L/N/PE hardware terminal connection	L/N/PE hardware terminal connection	L1/L2/L3/N/PE hardware terminal connection	L1/L2/L3/N/PE hardware terminal connection
Load segment control	Optional (need MBP model)	Optional (need MBP model)	Optional (need MBP model)	Optional (need MBP model)
Battery				
Voltage	192~240VDC adjustable	192~240VDC adjustable	384~480VDC adjustable	384~480VDC adjustable
Capacity(AH)	16*12V/9Ah, 16~20pcs adjustable	N/A	2*16*12V/9Ah, 32~40pcs adjustable	N/A
Backup time Typical value by default battery capacity, PF=1	2.1min 100% load 8.0min 50% load	N/A	1.8min 100% load 4.7min 50% load	N/A
Maximum connect external battery module quantity	6	6	6	6
Charger				
Charging current	2A (0-4A adjustable)	4A (0-12A adjustable)	2A (0-13A adjustable)	2A (0-13A adjustable)
Recharging time	3h to 90%	N/A	3h to 90%	N/A
Other Working Mode				
CVCF	Yes (derating to 60% load)	Yes (derating to 60% load)	Yes (derating to 60% load)	Yes (derating to 60% load)
Parallel	Optional (up to 3)	Optional (up to 3)	Optional (up to 3)	Optional (up to 3)



Think it.
Plan it.
Own it.

Technical Specification

Model	FP-OR-IOT-10K	FP-OR-IOT-10KS	FP-OR-IOT-20K	FP-OR-IOT-20KS
HMI (Human Machine Interface)				
Display	Dot matrix LCD, rotatable manually	Dot matrix LCD, rotatable manually	Colour touch LCD	Colour touch LCD
Language	10 Languages	10 Languages	10 Languages	10 Languages
USB	USB 2.0 with HID	USB 2.0 with HID	USB 2.0 with HID	USB 2.0 with HID
RS232	Yes (DB9)	Yes (DB9)	Yes (DB9)	Yes (DB9)
Dry in/out	1 programmable dry in; 1 programmable dry out	1 programmable dry in; 1 programmable dry out	1 programmable dry in; 1 programmable dry out	1 programmable dry in; 1 programmable dry out
EPO	Yes	Yes	Yes	Yes
Intelligent slot	Yes (for long card)	Yes (for long card)	Yes (for long card)	Yes (for long card)
Network card	Optional, NMC long card	Optional, NMC long card	Optional, NMC long card	Optional, NMC long card
Modbus card	Optional, CMC/Modbus long card	Optional, CMC/Modbus long card	Optional, CMC/Modbus long card	Optional, CMC/Modbus long card
Dry contactor card	Optional, AS400 long card	Optional, AS400 long card	Optional, AS400 long card	Optional, AS400 long card
WLAN module	Optional, HDMI type	Optional, HDMI type	Optional, HDMI type	Optional, HDMI type
Ethernet port for IOT	RJ45	RJ45	RJ45	RJ45
DCIM connection	Ready	Ready	Ready	Ready
Physical Performance				
Dimension (W*D*H) mm	5U height including 438*573*86.2 (power module, 2U) 438*593*129 (Battery, 3U)	438*573*86.2 (power module, 2U)	9U height including 438*589*129 (power module, 3U) 438*593*129 x 2 (Battery, 6U)	438*589*129 (power module, 3U)
IP protection level	IP20	IP20	IP20	IP20
Environment				
Operating temperature	0-50°C (power derating to 50% @40-50°C)	0-50°C (power derating to 50% @40-50°C)	0-50°C (power derating to 50% @40-50°C)	0-50°C (power derating to 50% @40-50°C)
Relative Humidity	0-95%	0-95%	0-95%	0-95%
Operating Altitude	0-3000m (the load derating 1 % every up 100m @1000-3000m)	0-3000m (the load derating 1 % every up 100m @1000-3000m)	0-4000m (the load derating 1 % every up 100m @1000-4000m)	0-4000m (the load derating 1 % every up 100m @1000-4000m)
Acoustic Noise	<55dB @ typical load with battery fully charged	<55dB @ typical load with battery fully charged	<55dB @ typical load with battery fully charged	<55dB @ typical load with battery fully charged
Certification	CE,IEC/EN 62040	CE,IEC/EN 62040	CE,IEC/EN 62040	CE,IEC/EN 62040
EMI				
Conduction/Radiation	C3	C3	C3	C3
EMS				
ESD	IEC/EN 61000-4-2	IEC/EN 61000-4-2	IEC/EN 61000-4-2	IEC/EN 61000-4-2
RS	IEC/EN 61000-4-3	IEC/EN 61000-4-3	IEC/EN 61000-4-3	IEC/EN 61000-4-3
EFT	IEC/EN 61000-4-4	IEC/EN 61000-4-4	IEC/EN 61000-4-4	IEC/EN 61000-4-4
Surge	IEC/EN 61000-4-5	IEC/EN 61000-4-5	IEC/EN 61000-4-5	IEC/EN 61000-4-5
Accessory				
Maintenance bypass switch	Optional (build in 1 main outlet group with 1 x IEC C19 + 2 x IEC C13 and 1 programmable outlet group with 1 x IEC C19 + 2 x IEC C13)	Optional (build in 1 main outlet group with 1 x IEC C19 + 2 x IEC C13 and 1 programmable outlet group with 1 x IEC C19 + 2 x IEC C13)	Optional (need MBP model)	Optional (need MBP model)
Input power cable	N/A	N/A	N/A	N/A
Output power cable	N/A	N/A	N/A	N/A
EBM cable	Yes (in EBM)	Yes (in EBM)	Yes (in EBM)	Yes (in EBM)
USB cable	Yes	Yes	Yes	Yes
RS232 cable	Optional	Optional	Optional	Optional
Rail kit	Optional	Optional	Optional	Optional
Tower feet	Yes	Yes	Yes	Yes
Rack mount kit	Yes	Yes	Yes	Yes
Manual	Yes	Yes	Yes	Yes

*Due to continuous product improvement programs, specifications are subject to change without notice.



Think it.
Plan it.
Own it.

+852 2113 2968 | enquiry@iDCmini.com | www.iDCmini.com

Rear Panel Photo



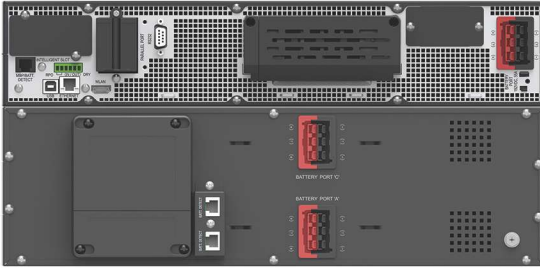
FP-OR-IOT-1K/1KS



FP-OR-IOT-2K/2KS



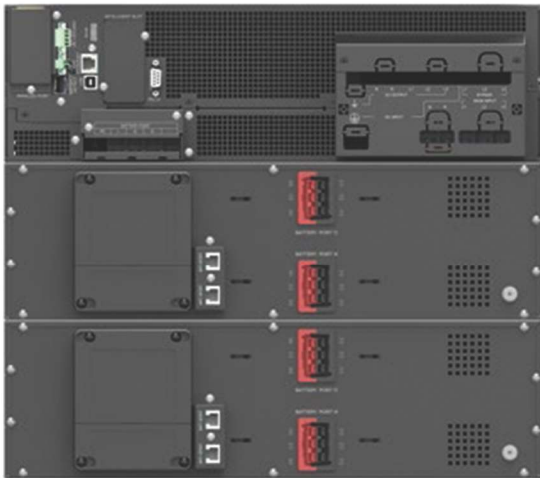
FP-OR-IOT-3K/3KS



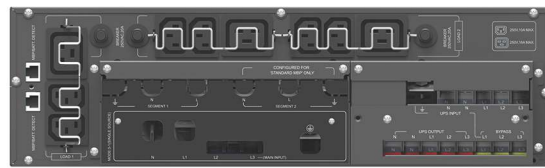
FP-OR-IOT-6K/6KS/10K/10KS



FP-OR-IOT-6K/6KS/10K/10KS Maintenance Bypass



FP-OR-IOT-20K/20KS



FP-OR-IOT-20K/20KS Maintenance Bypass



Think it.
Plan it.
Own it.