

# iDC FlexiPower Online IoT Rack Lithium 1-10kW

A high performance true online UPS with lithium battery



iDC IoT Lithium UPS, ranging from 1-10kW, is a high performance true online UPS system with a Level 3 Built-in lithium battery, synchronization with UPS offering higher efficiency, longer lifespan, faster charging, and better performance in a smaller, more lightweight package, making them an attractive choice for many applications.

In addition, it comes with IoT compatibility automatically monitoring power quality and battery status.



## Light Weight

Our Lithium Battery UPS is 40% lighter than VRLA batteries. This reduction in weight not only makes installation easier but also helps in minimizing supporting build costs



## Cost

Lithium-ion UPS systems tend to have a higher upfront cost; they can prove to be more economical in the long run due to their extended lifespan and reduced maintenance needs



## Charging Speed

Lithium-ion UPS can be charged at a faster rate, reducing recovery time after discharge



## Included Battery Monitoring

An integrated battery monitoring feature is embedded right from the start to eliminate the need for additional expenses to set up a separate battery monitoring system, saving you extra costs



## Long Battery Life

Lithium battery lifespan lasts from 10-12 years comparing to lead acid lifespan of 3-5 years, our Lithium Battery UPS ensures extended usage without the need for frequent replacements. This longevity saves you both time and money in the long run



## Maintenance

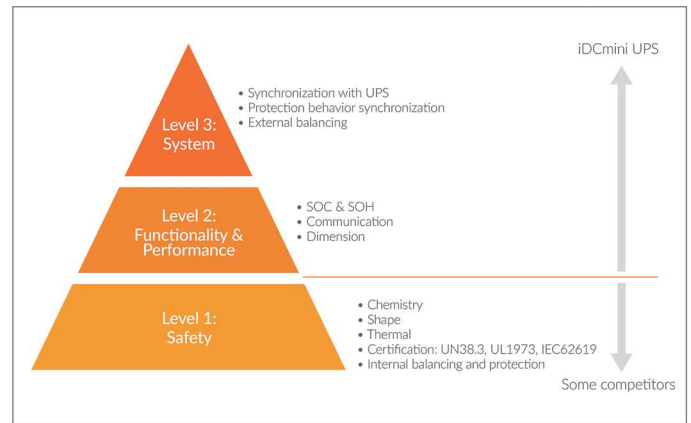
Lithium-ion UPS demands minimal maintenance, eliminating the need for regular water or acid level checks; and hence reduces the frequency of replacements. A built-in real-time battery monitoring system enables scheduled preventive maintenance checks to be conducted from quarterly to half-yearly or even yearly intervals



Think it.  
Plan it.  
Own it.

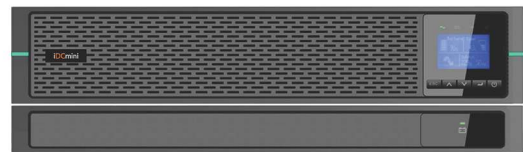
## Key Technology

- Level 3 Lithium Battery System with advanced BMS
- Industry leading BMS reliability design
- Built-in cloud connection
- Up to 4 compact external hot-swappable battery modules
- UPS and lithium battery UL, IEC certification, cybersecurity certificate

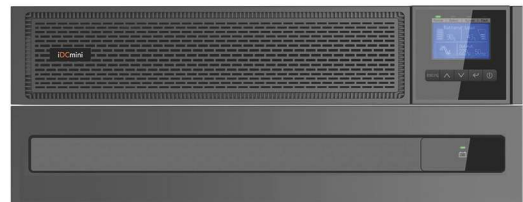


## Key Features

- Lower TCO than lead-acid solution
- Longer battery lifespan
- Maximum output power factor is 1, VA=W
- Level 3 built-in lithium battery, synchronization with UPS (SOC, SOH, behavior, external balancing)
- Extended backup time with up to 4 optional EBMs, with automatic detection
- Compact design:
  - UPS: 2U
  - 1-3kW EBM: 1U
  - 6-10kW EBM: 2U
- Rack/tower dual set-up with rotatable LCD panel
- USB, RS232 port, dry contacts, RPO & ROO connectors, optional SNMP
- Built-in Ethernet port for cloud connection
- Certification: UN38.3, UL1973, IEC62019, CE, IEC62040



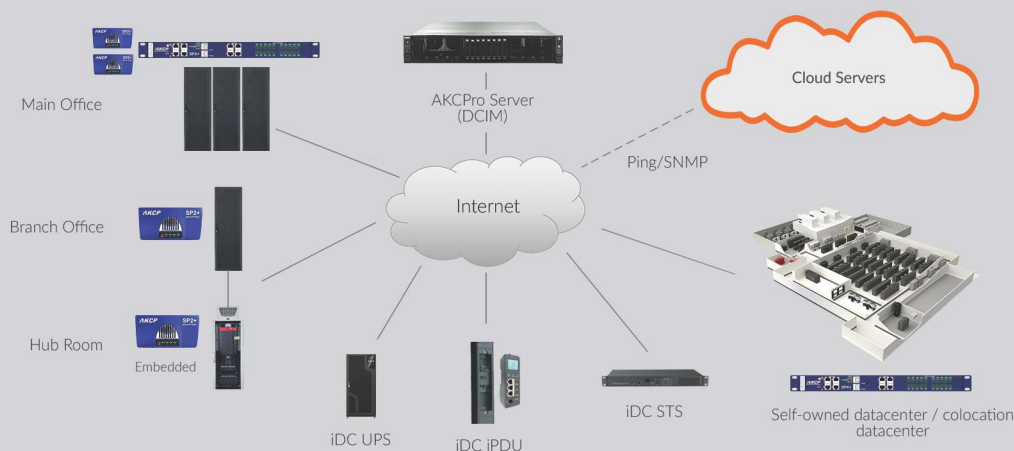
iDC FlexiPower Online IoT Lithium, 1.5kW & 3kW



iDC FlexiPower Online IoT Lithium, 6kW & 10kW

## DCIM Ready

Managing iDC UPS has never been more easier. Built-in template for monitoring real-time power consumption and operational status of iDC UPS has been engineered into our DCIM System which makes integration with DCIM System within seconds!



Think it.  
Plan it.  
Own it.

# Technical Specification

Model	FP-OR-IOT-Li-1.5K	FP-OR-IOT-Li-3K	FP-OR-IOT-Li-6K	FP-OR-IOT-Li-10K
Power Rating	1500VA/1500W	3000VA/3000W	6000VA/6000W	10000VA/10000W
<b>Input Performance</b>				
Voltage range	110~300V	110~300V	110~276V	110~276V
Frequency range	45~55Hz/54~66Hz	45~55Hz/54~66Hz	45~55Hz/54~66Hz	45~55Hz/54~66Hz
Input Wiring	Single Phase with ground	Single Phase with ground	Single Phase with ground	Single Phase with ground
Input power factor	0.99	0.99	0.99	0.99
Current distortion (THDi)	<5% @full load	<5% @full load	<3% @full load	<3% @full load
Input Connection	IEC C14	IEC C20	L/N/PE hardware terminal connection	L/N/PE hardware terminal connection
<b>Output Performance</b>				
Output power factor	1	1	1	1
Nominal output voltage	200/208/220/230/240V	200/208/220/230/240V	208/220/230/240V	208/220/230/240V
Voltage regulation	± 1%	± 1%	± 1%	± 1%
Frequency range (Battery mode)	50/60 ± 0.2Hz	50/60 ± 0.2Hz	50/60 ± 0.1Hz	50/60 ± 0.1Hz
Current crest ratio	3:1	3:1	3:1	3:1
Voltage distortion (THDv)	<1% linear load, <5% non-linear load	<1% linear load, <5% non-linear load	<1% linear load, <5% non-linear load	<1% linear load, <5% non-linear load
Output waveform	Pure Sine Wave	Pure Sine Wave	Pure Sine Wave	Pure Sine Wave
Parallel operation	No	No	Yes, up to 3	Yes, up to 3
<b>Output Connection</b>				
Wiring/socket	1 main outlet group (with 4 x IEC C13) and 1 programmable outlet group (with 4 x IEC C13)	1 main outlet group (with 1 x IEC C19 + 4 x IEC C13) and 1 programmable outlet group (with 4 x IEC C13)	L/N/PE hardware terminal connection	L/N/PE hardware terminal connection
<b>Efficiency</b>				
Inverter mode	93%	93%	95%	95%
ECO mode	97%	97%	98%	98%
<b>Transfer Time</b>				
Battery mode ↔ Inverter mode	0ms	0ms	0ms	0ms
Inverter mode ↔ Bypass mode	4ms	4ms	0ms	0ms
ECO mode ↔ Battery mode	<10ms	<10ms	<10ms	<10ms
<b>Dimension</b>				
UPS: W*H*D (mm)	438*86.5*445 (2U)	438*86.5*608 (2U)	438*86*573 (2U)	438*86*573 (2U)
EBM: W*H*D (mm)	439*43*445 (1U)	439*43*608 (1U)	438*86*600 (2U)	438*86*600 (2U)
<b>Environment</b>				
Operating temperature	0-40°C	0-40°C	0-50°C	0-50°C
Noise level	<40dB @1meter	<45dB @1meter	<50dB @1meter	<55dB @1meter
<b>Interface</b>				
Display	Dot matrix LCD, rotatable manually			
RS232/USB	Yes, USB HID			
Intelligent slot	Yes, 1 slot for network card, modbus card or dry contact card			
Dry contact	Dry in and dry out, programable			
EPO	Yes			
Ethernet port	Built-in ethernet port support direct cloud connection or local network connection			
WIFI connection	Optional			
Certification	CE; IEC62619 for lithium battery; IEC62040 for UPS			

\*Due to continuous product improvement programs, specifications are subject to change without notice.

\*\*1kW and 2kW are available upon request.



Think it.  
Plan it.  
Own it.

+852 2113 2968 | enquiry@iDCmini.com | www.iDCmini.com

# Lithium Battery Technical Specification

Model	1.5kW	3kW	6kW	10kW
Rated battery voltage	48V	76.8V	192V	192V
Type	Li-ion (LiFePo4)	Li-ion (LiFePo4)	Li-ion (LiFePo4)	Li-ion (LiFePo4)
EBM dimension (W*H*D) mm	439*43*608	439*43*608	438*86*600	438*86*600
<b>Voltage &amp; Capacity</b>				
Internal battery	48V x 9Ah	76.8V x 9Ah	N/A	N/A
External battery module	48V x 12Ah 76.8V x 12Ah	48V x 12Ah 76.8V x 12Ah	192V x 12Ah	192V x 12Ah
Floating charging voltage	3.515V/cell	3.515V/cell	3.515V/cell	3.515V/cell
Over charger protection point	3.8V/cell	3.8V/cell	3.8V/cell	3.8V/cell
EBM number	Maximum 4	Maximum 4	Maximum 4	Maximum 4
<b>Backup time</b>				
Full load - Internal battery	10mins	10mins	N/A	N/A
Half load - Internal battery	20mins	20mins	N/A	N/A
Full load - 1EBM	26mins	22mins	18mins	10mins
Half load - 1EBM	53mins	45mins	36mins	22mins
Certificate	CE, CB Report, CB-IEC62619 li-ion battery, UN38.3			

\*Due to continuous product improvement programs, specifications are subject to change without notice.

\*\*1kW and 2kW are available upon request.



Think it.  
Plan it.  
Own it.